

# The vital element of any airport operation

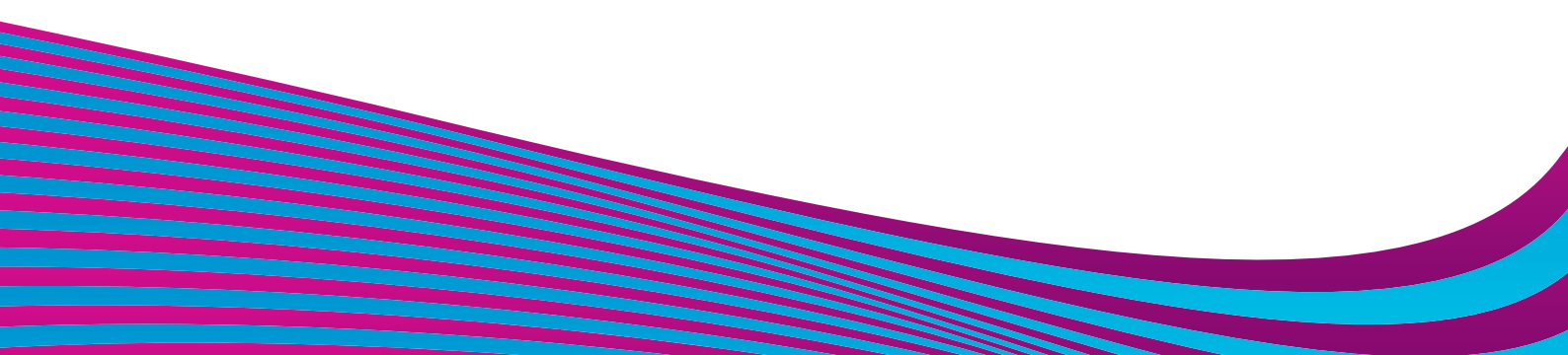
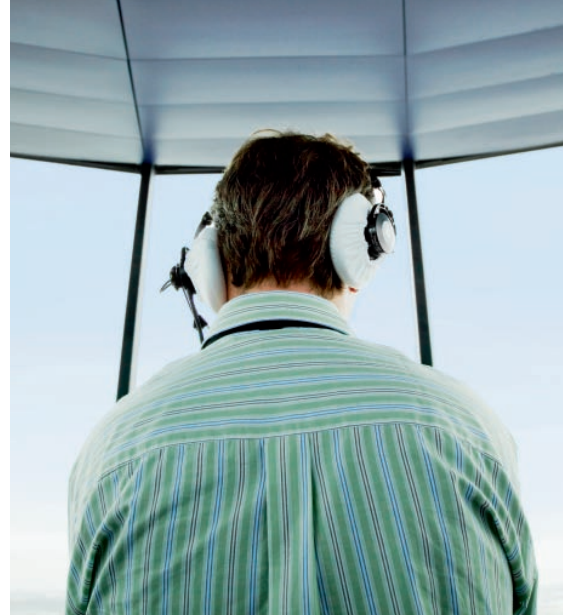
Air Traffic Control is a central element of any airport operation, supporting an efficient airside operation whilst ensuring that the highest levels of safety remain paramount. Effective integration with other key airside functions is essential as any service disruptions can have a significant impact on the airport business. A strong airport/ATC partnership will bring major benefits to the airport company and help to ensure that growth aspirations are effectively planned and implemented, that operational safety performance is maintained and that increased capacity is delivered.

## Tackling the toughest challenges

Our customers work in a very challenging environment. As well as delivering a safe and secure service 24/7, 365 days a year and ensuring full compliance with the latest legislation, they are constantly looking for opportunities to improve their operation, for example by increasing capacity, raising efficiency or deploying new technology where there is a guaranteed return on investment. NATS Services helps its customers to tackle all of these challenges.

## A proven track record

- NATS Services manages the air traffic control service at 15 of the UK's busiest airports, as well as in Gibraltar
- For the world's top 100 airports, we control more combined airport traffic than any other service provider except the FAA in the USA
- We're responsible for the most capacity constrained airports in the world – Heathrow and Gatwick are the world's busiest dual and single runway operations respectively
- We have a proven track record in managing large scale change projects, such as the move of Heathrow's control tower, and the establishment of Heathrow's Virtual Contingency Facility – a world first
- Our wide ranging experience spans many different airport types – from international hubs to smaller regional airports, and from general aviation airfields to specialist aviation applications such as oil field operations and weapons ranges
- We're taking a leading role in influencing the SESAR (Single European Sky ATM Research) program, as well as developing a detailed understanding of the regulatory changes that the SES initiative will bring





## A breadth of capabilities

- Air traffic control services typically comprise the provision of tower and approach functions, as well as a meteorological observation service at an airport
- We can offer an on-airfield ATC engineering function to ensure the support of equipment used in the provision of the above services
- We can provide a full suite of ATC services, or tailor the ATC offering to meet specific customer requirements. Where full outsourcing of the ATC function is less preferred, we can provide a 'management only' function
- Technical innovation such as the introduction of electronic flight progress systems at the London Airports
- We offer a growing number of related airside services such as stand planning and airside driver training
- We have a wide-ranging in-house consultancy capability to assist airports in capacity planning and environmental mitigation initiatives, as well as safety measurement and improvement tools

## Delivering benefits

- **Risk transfer (from airport operator to NATS Services)** – in terms of safety accountability, capacity provision, and continuity of supply of professionally trained staff
- **Application of best practice** – ongoing safety and service experience shared across our network of airport customers
- **Flexibility** – scope and level of service provision can be tailored to individual customer requirements
- **Convenience and efficiency** – integrated contract management (combining ATC, engineering and consultancy elements) simplifies airport internal interfaces
- **Breadth and depth of resources** – access to unique consultancy and engineering expertise within NATS
- **SES 'future-proofing'** – ensure compliance with anticipated European ATC related regulatory and technology changes

**For more information on how NATS Services can help with air traffic control, please contact:**

Juliet Kennedy, Head of Air Traffic Control, NATS Services, Heathrow House, Bath Road, Hounslow, TW5 9AT

T: +44(0)20 8750 3702

[www.natsservices.com](http://www.natsservices.com)